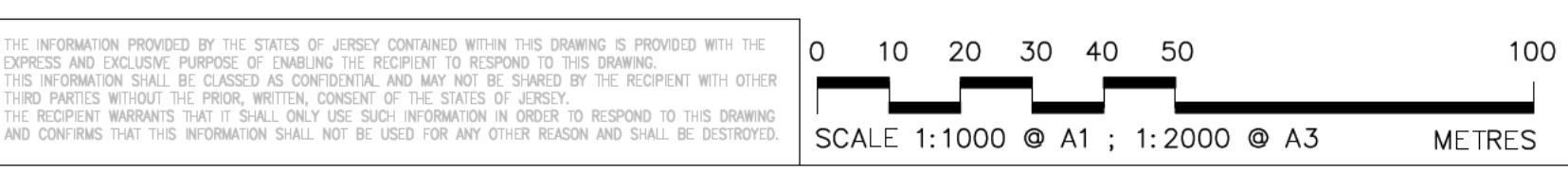
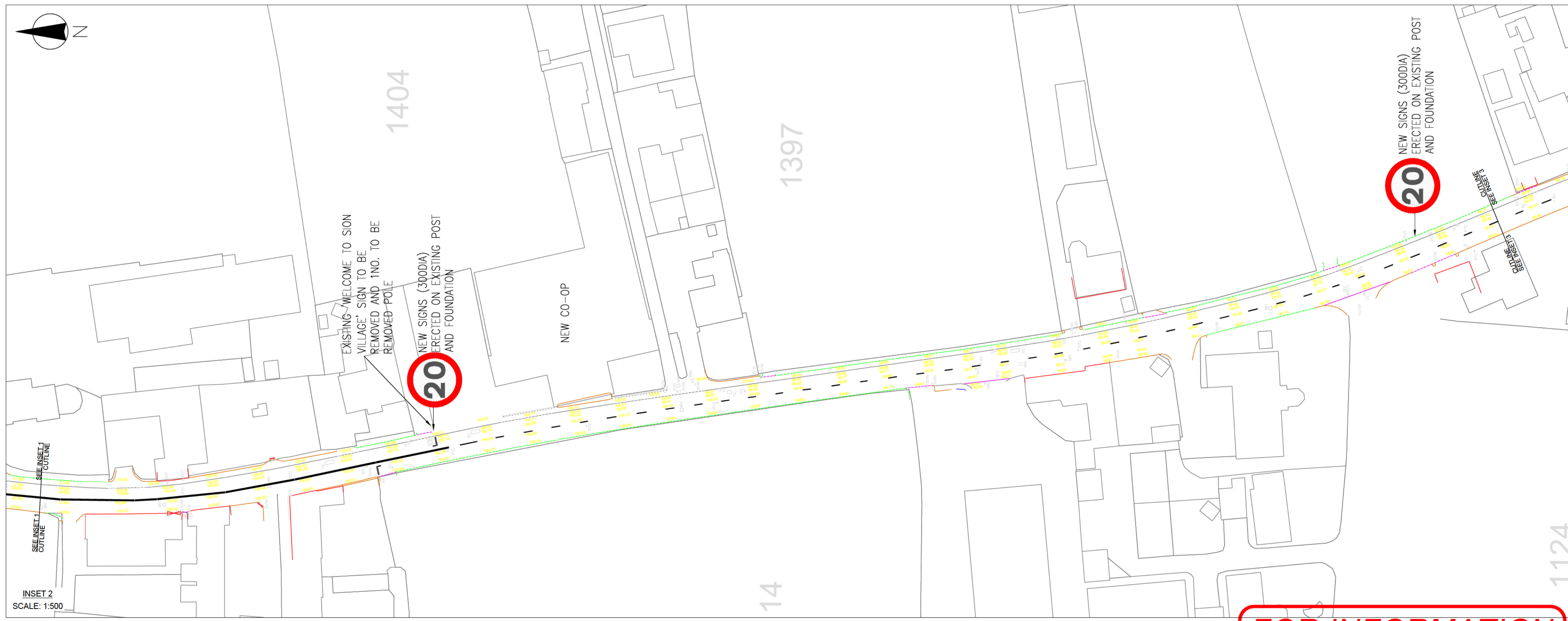
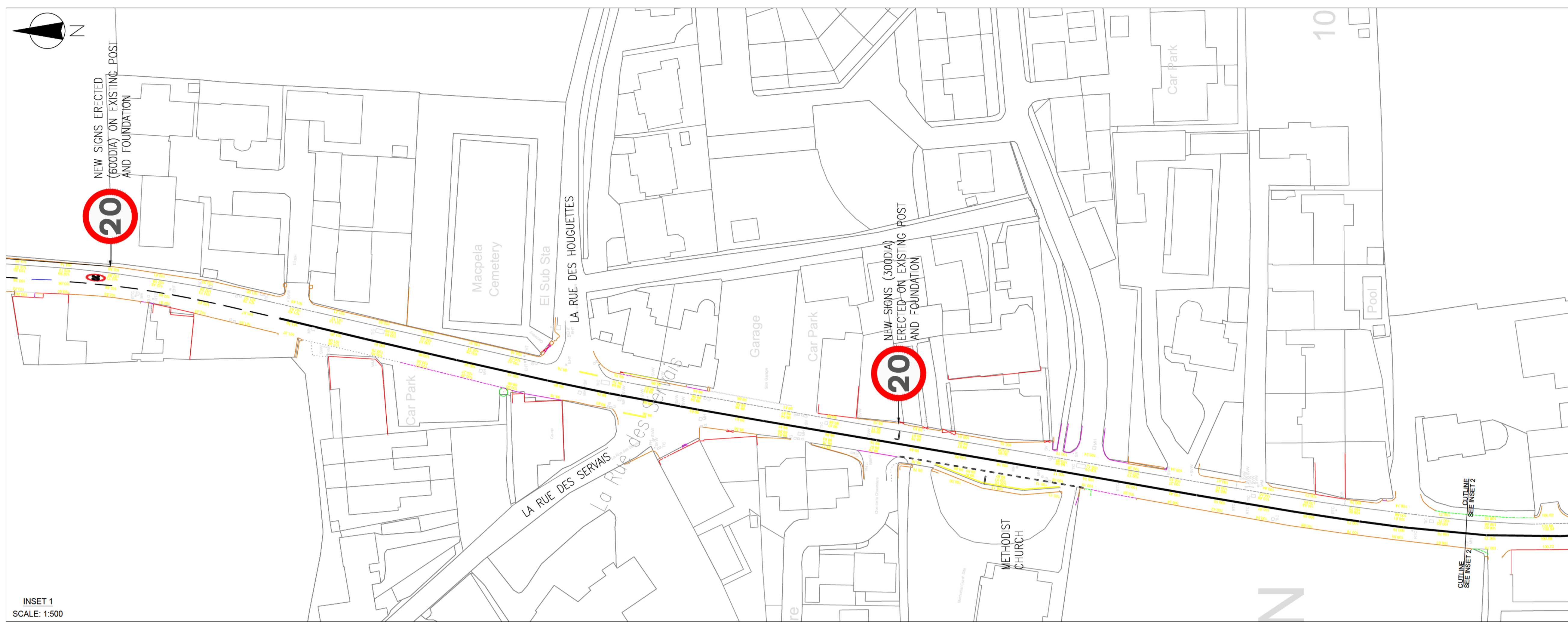


KEY:

NOTES



FOR INFORMATION

P1	Jun'19	For information
Rev.	Date	Details

Infrastructure, Housing and Environment

Transport
 P.O. Box 412, Beresford House,
 Bellozanne Road, St Helier,
 Jersey, JE4 8UY
 Tel: +44 (0)1534 445509 website: www.gov.je
 email: DFI@gov.je

Project
**SION VILLAGE
 SPEED LIMIT VIEW**

Title
GENERAL ARRANGEMENTS

Drawn by: Checked by:
 Scale: 1:500 @ A1 Date: SEP'21

KEY:

NOTES



Rev.	Date	For information
P1	Jun'19	For information
		Details

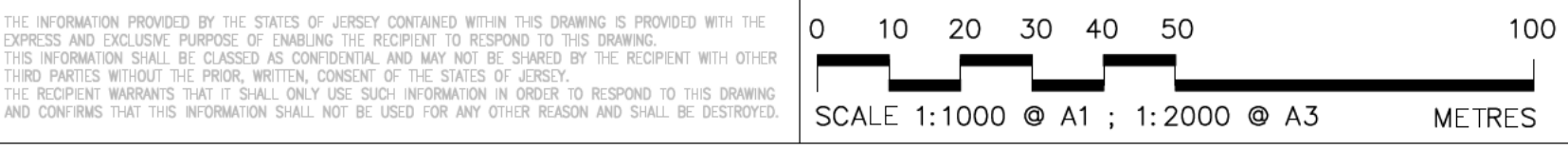
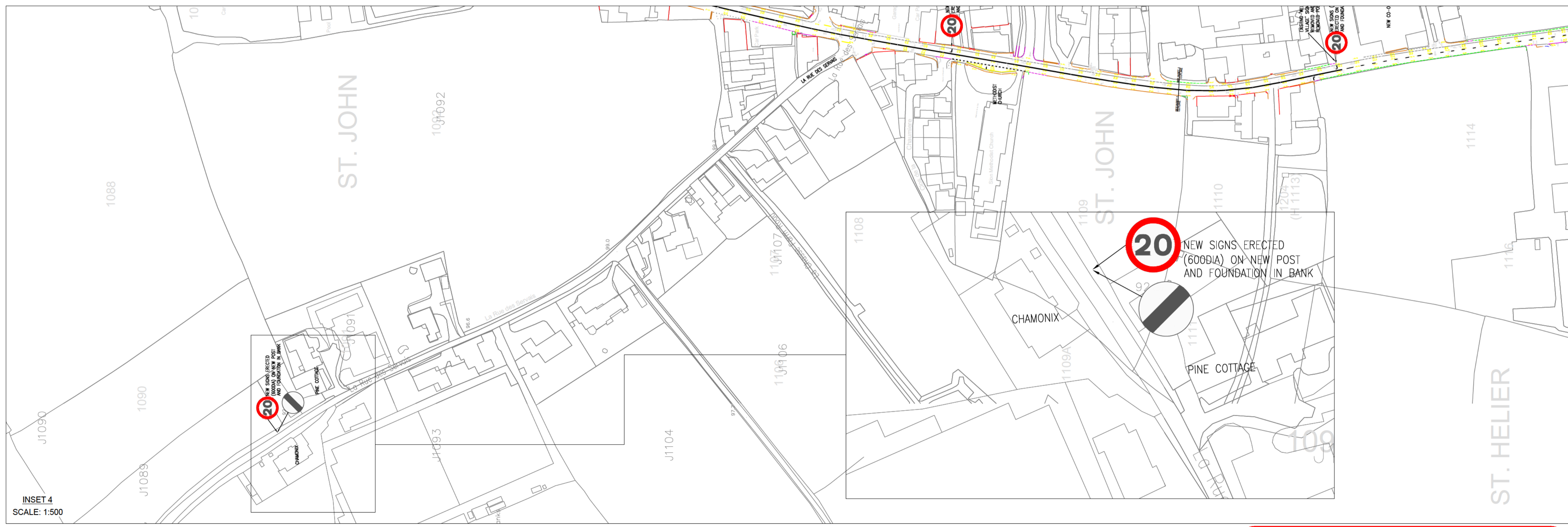
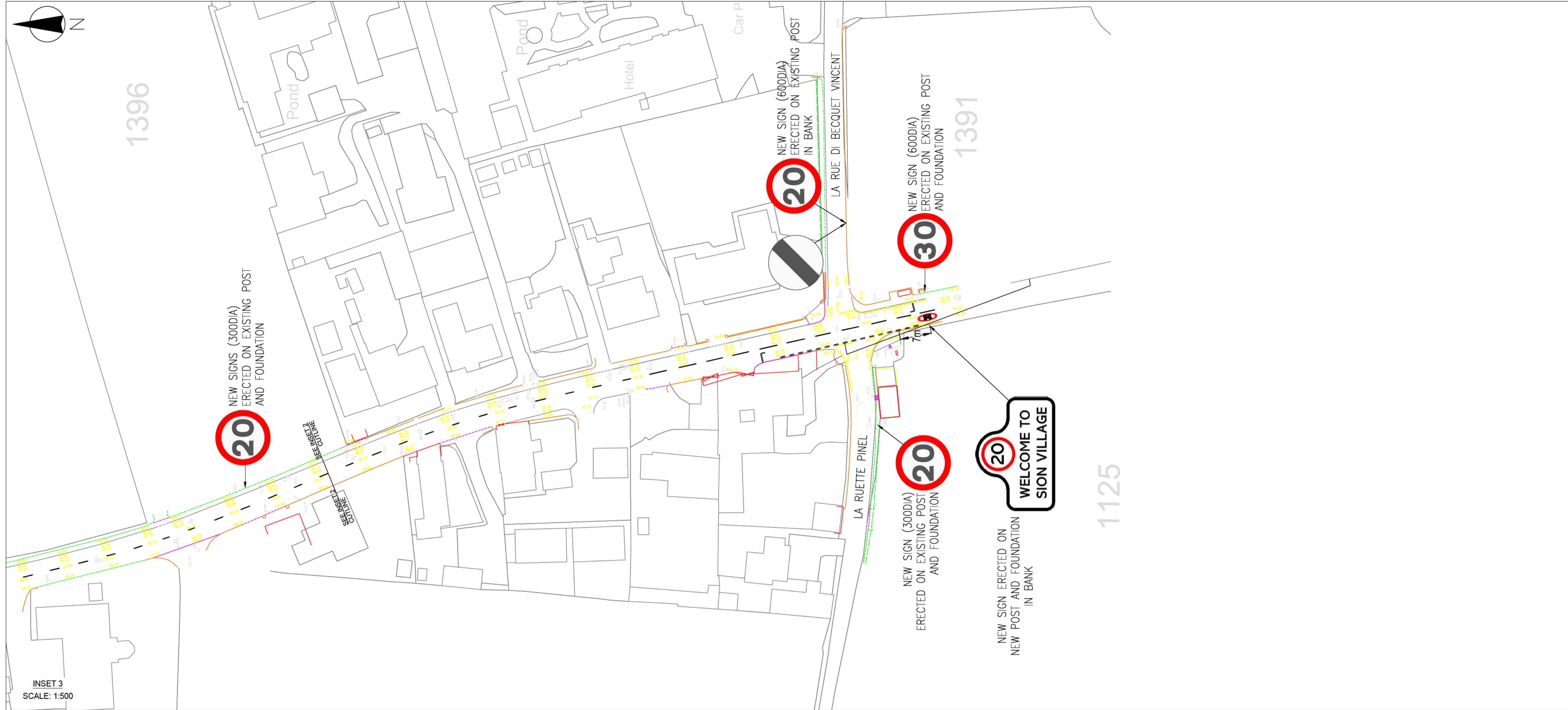
Infrastructure, Housing and Environment 

Transport
 P.O. Box 412, Beresford House,
 Bellozanne Road, St Helier,
 Jersey, JE4 8UY
 Tel: +44 (0)1534 445509 website: www.gov.je
 email: DFI@gov.je

Project
**SION VILLAGE
 SPEED LIMIT REVIEW**

Title
GENERAL ARRANGEMENTS

Drawn by:  Checked by: 
 Scale: 1:200 @ A1 Date: SEP'21



FOR INFORMATION

THE INFORMATION PROVIDED BY THE STATES OF JERSEY CONTAINED WITHIN THIS DRAWING IS PROVIDED WITH THE EXPRESS AND EXCLUSIVE PURPOSE OF ENABLING THE RECIPIENT TO RESPOND TO THIS DRAWING. THIS INFORMATION SHALL BE CLASSIFIED AS CONFIDENTIAL AND MAY NOT BE SHARED BY THE RECIPIENT WITH OTHER THIRD PARTIES WITHOUT THE PRIOR WRITTEN CONSENT OF THE STATES OF JERSEY. THE RECIPIENT WARRANTS THAT IT SHALL ONLY USE SUCH INFORMATION IN ORDER TO RESPOND TO THIS DRAWING AND CONFIRMS THAT THIS INFORMATION SHALL NOT BE USED FOR ANY OTHER REASON AND SHALL BE DESTROYED.